

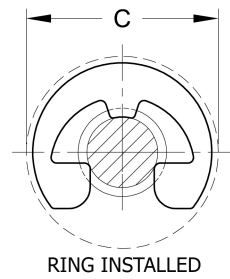
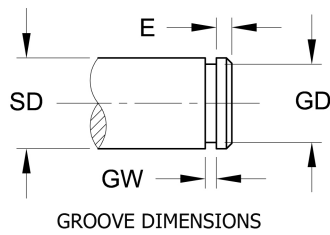
RING DIMENSIONS

S&M Series XER External Reinforced E-ring	SHAFT DIAMETER			RING DIMENSIONS				APPROX. WT. PER 1000 RINGS (Lbs.)	
	DEC. EQUIV. INCH	FRAC. EQUIV. INCH	MM	FREE DIAMETER		THICKNESS			DIAMETER
ASME-B18-27-2NA5 MIL-R-21248 MS-3215	SD	SD	SD	D	TOL.	T	TOL.	D	
XER0009	.094	3/32	2.38	.072	+ .001	.015	+/- .002	.206	.09
XER0012	.125	1/8	3.18	.093	- .003	.015		.270	.13
XER0015	.156	5/32	3.97	.113	+/- .003	.025		.335	.31
XER0018	.188	3/16	4.76	.143		.025		.375	.38
XER0021	.219	7/32	5.56	.182		.025		.446	.53
XER0025	.250	1/4	6.35	.204	+/- .004	.025		.516	.69
XER0031	.312	5/16	7.94	.242		.025		.588	.88
XER0037	.375	3/8	9.53	.292		.035		.660	1.50
XER0043	.438	7/16	11.11	.332		.035		.746	1.90
XER0050	.500	1/2	12.70	.385	+/- .004	.042		.810	2.57
XER0056	.562	9/16	14.29	.430		.042	.870	3.00	

Rings must not be over-expanded during installation, since this will lead to ring failure. Providing groove has been machined to recommended dimensions, play between the groove diameter and the inside ring diameter indicates that the ring has been over-expanded.

*C=Ring clearance diameter after ring is applied in groove.

*TG= Groove wall thrust loads shown are for grooves machined in cold-rolled steel with tensile yield strength of 45,000 psi.



ROCKWELL HARDNESS (CARBON STEEL W/O PLATING)	Static Thrust Load (Lbs.) Sharp Corner Abutment		RING CLEARANCE	GROOVE DIMENSIONS				EDGE MARGIN	S&M Series XER External Reinforced E-ring
	RING	GROOVE		DIAMETER		WIDTH			ASME-B18-27-2NA5 MIL-R-21248 MS-3215
	TR	**TG		*C	GD	TOL.	GW		TOL.
15N 85.0-87.0	55	13	.220	.074	+ .002 - .000	.018	+ .002 - .000	.020	XER0009
15N 85.0-87.0	75	25	.285	.095		.018		.030	XER0012
30N 67.5-71.0	150	40	.350	.116		.029		.040	XER0015
30N 67.5-71.0	180	50	.390	.147	+/- .002	.029	+ .003 - .000	.040	XER0018
30N 67.5-71.0	215	50	.460	.188		.029		.031	XER0021
30N 67.5-71.0	250	75	.530	.210		.029		.040	XER0025
30N 67.5-71.0	300	135	.610	.250	+/- .003	.029	- .000	.062	XER0031
C 48-52	520	190	.680	.303		.039		.072	XER0037
C 48-52	600	285	.770	.343		.039		.096	XER0043
C 48-52	820	360	.830	.396		.046		.104	XER0050
C 48-52	930	480	.890	.437		.046		.124	XER0056

Standard Material = Carbon Spring Steel (SAE 1060-1090)

Standard Finish= Oil-dipped

For plated, phosphate-coated and stainless steel rings, the maximum ring thickness will not exceed the minimum groove width (GW) minus .0002".