



How to order S&M Rings!

XER0050SPPB

1-866-79-RINGS

NOTE: NO SPACES IN PART NUMBERS

RING SERIES

XER

RING SIZE

0050

RING MATERIAL

S

RING FINISH

PP

PACKAGING

B

- XC** - EXTERNAL CRESCENT
- XE** - EXTERNAL "E"
- XEB** - EXTERNAL BASIC
- XER** - EXTERNAL "E" REINFORCED
- XEX** - EXTERNAL "E" X-STYLE
- KEY** - EXTERNAL "E" Y-STYLE
- XK** - EXTERNAL KLIPRING
- XKT** - EXTERNAL KLIPRING (THIN)
- XRG** - EXTERNAL RADIAL GRIP

EXTERNAL
RADIALLY
APPLIED

- IB** - INTERNAL BASIC
- IBB** - INTERNAL BASIC BOWED
- IBV** - INTERNAL BASIC BEVELED
- IIV** - INTERNAL INVERTED
- IP** - INTERNAL PUSH-ON

INTERNAL
AXIALLY
APPLIED

- XB** - EXTERNAL BASIC
- XBB** - EXTERNAL BASIC BOWED
- XBV** - EXTERNAL BASIC BEVELED
- XG** - EXTERNAL GRIP
- XHD** - EXTERNAL HEAVY DUTY
- XIV** - EXTERNAL INVERTED
- XP** - EXTERNAL PUSH-ON

EXTERNAL
AXIALLY
APPLIED

INDICATES
SIZE

- S** - 1074 CARBON STEEL
- HST** - PH 15-7 MO STAINLESS STEEL
- CST** - BERYLLIUM COPPER

NOTE: OTHER MATERIALS
AVAILABLE UPON REQUEST

PP - BLACK PHOSPHATE &
DRY OIL

PM - BLACK PHOSPHATE &
METAL GUARD

ZD - MECHANICAL ZINC
DICHROMATE

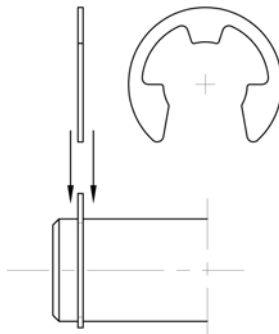
ZF - MECHANICAL ZINC
BRIGHT

ZT - TRIVALENT

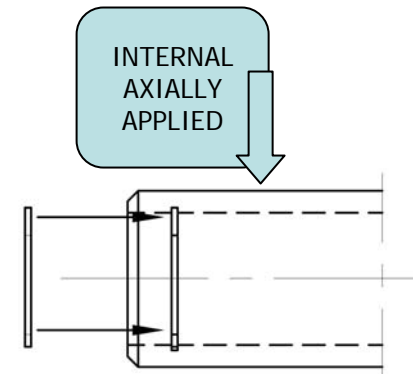
NOTE: OTHER FINISHES AND COATING
AVAILABLE UPON REQUEST

B - BULK

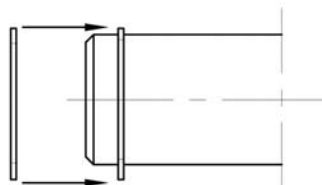
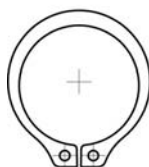
T - TAPED STACKED
W - WIRED



EXTERNAL
RADIALLY
APPLIED



INTERNAL
AXIALLY
APPLIED



EXTERNAL
AXIALLY
APPLIED